

## LETTER OF ELIGIBILITY

April 23, 2021

Sahib Sultan  
Preet Nagar Hareri Road, Gali No. 2  
Sangrur, Punjab  
INDIA 148001

Student Name: Sahib Sultan  
Date of Birth: October 23, 2001  
Student ID: 000064053  
Semester: Fall (September) 2021

Thank you for your application to Yukon University to attend the General Studies diploma program. Your admission to the program is conditional upon meeting the following 'checked' pre-requisites:

### ENGLISH

- ☐ Entrance requirement met
- ✓ Course prerequisite – must take WritePlacer English assessment prior to registration
- ☐ Entrance requirement not met. You must do one of the following

1. Have your transcript (high school and/or post-secondary) evaluated by a Canadian evaluation service to demonstrate the admission requirement for your program has been met (we accept evaluations from International Credential Evaluation Service (ICES - <http://www.bcit.ca/ices/whatwedo.shtml>) or International Qualifications Assessment Service (IQAS - <http://work.alberta.ca/immigration/international-qualifications-assessment-service.html>). OR

2. Provide an English proficiency test results from IELTS (all sections 6.0 or above) or TOEFL iBT 79 in academic testing. Results must be received at Yukon University no later than 6 weeks prior to the start of the program.

3. If you are not able to complete number 1 or 2, an English assessment will be arranged for you when you arrive on campus. You must notify the International Student Advisor in advance. The results of the assessment will place you at a specific level of English. You may be required to attend the English as a Second Language program at Yukon University. Successful completion of this program will provide the English admission requirement for your chosen program.

### **MATHEMATICS:**

✓ Entrance requirement met/No math requirement

☐ Entrance requirement not met. You must do one of the following:

1. Have your transcript (high school and/or post-secondary) evaluated by a Canadian evaluation service to demonstrate the admission requirement for your program has been met (we accept evaluations from International Credential Evaluation Service (ICES - <http://www.bcit.ca/ices/whatwedo.shtml>) or International Qualifications Assessment Service (IQAS - <http://work.alberta.ca/immigration/international-qualifications-assessment-service.html>), OR

2. If you are not able to complete number 1, a math assessment will be arranged for you when you arrive on campus. You must notify the International Education Student Advisor in advance. The results of the assessment will place you at a specific level of math. You may be required to attend the math upgrading courses at Yukon University. Successful completion of this program will provide the math admission requirement for your chosen program.

### **Additional Criteria:**

✓ No additional admissions criteria required

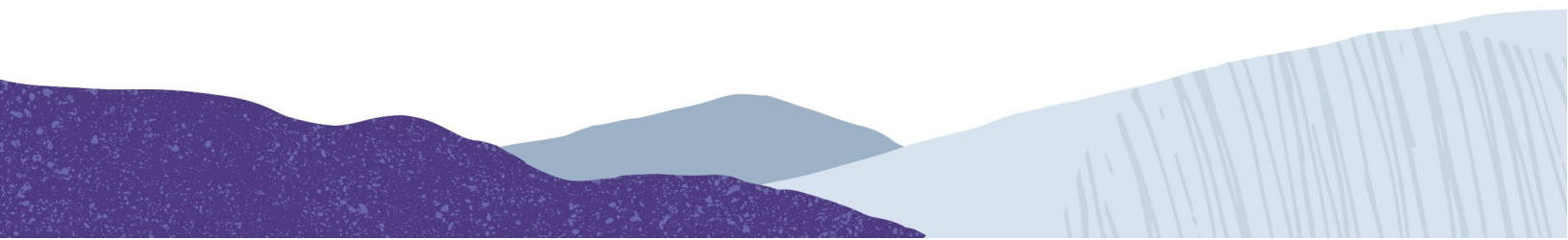
☐ Please go to Programs on Yukon University website

(<https://www.yukonu.ca/programs/all>) to see the Admission Requirements.

### **Documentation:**

✓ Completed

☐ Not yet completed.



Yukon University requires official high school and relevant post-secondary transcripts and graduation credentials. All documents are to be received by the International Admissions Officer. All documents not originally issued in English must be accompanied by a certified English translation. If Yukon University does not receive the documentation prior to your arrival, you must present originals to the International Student Advisor when you arrive on campus. Specifically, the copies of your documents, including the IELTS/ TOEFL results seem to be complete but the details are not legible. Please send by courier or bring with you.

**Fees:**

Pay your fee – \$12,000 Canadian dollars tuition deposit is due within 30 days of receipt of this letter. To make a payment, please visit <https://www.yukonu.ca/international-payments>. Tuition fees are subject to change. Once we receive the fee, a formal Letter of Acceptance will be sent to you.


**Refund Policy:**

There will be no tuition deposit refund unless your study permit application is rejected by Immigration, Refugees and Citizenship Canada. You must provide the University with a copy of the letter of rejection from Immigration, Refugees and Citizenship Canada, within three months of the date of receipt, in order to receive a tuition deposit refund. The refund will be processed within 6 to 8 weeks and will either be in the form of a cheque or through CIBC Student Pay. The final amount paid to you will be reduced by a \$300 processing fee, and any other applicable charges such as courier fees or bank processing charges. Please note: Tuition fees are not transferrable to other institutions.

**Change of the Program:**

Within the first year, it's not permissible to change the program from what you were accepted.

Thank you for choosing Yukon University as your choice for post-secondary education.



Carrie Hassard  
International Admissions Officer  
Yukon University

